

Table 14. Unweighted Criminal Caseload, FY2005

COUNTIES	CLASS TWO MISDEMEANOR & PETTY OFFENSES				CLASS ONE MISDEMEANOR					FELONY					Total Criminal Filings
	Fil-ings	Guilty Pleas	Dis- mis- sals	Jury Trials	Fil-ings	Pre- lim. Hrgs.	Guilty Pleas	Dis- mis- sals	Jury Trials	Fil-ings	Pre- lim. Hrgs.	Guilty Pleas	Dis- mis- sals	Jury Trials	
1st CIRCUIT															
Aurora	362	355	14	0	44	4	26	5	0	24	0	7	1	1	430
Bon Homme	520	496	26	0	48	5	22	5	2	57	5	2	11	1	625
Brule-Buffalo	1,264	1,156	122	0	153	31	104	54	0	39	8	7	34	0	1,456
Charles Mix	2,414	2,152	71	0	408	11	241	67	0	124	3	44	34	3	2,946
Clay	2,056	1,940	74	0	354	3	297	16	1	84	2	33	8	1	2,494
Davison	3,922	3,347	338	0	738	24	471	81	0	162	4	74	27	0	4,822
Douglas	489	473	9	0	25	3	14	2	0	6	3	2	0	0	520
Hanson	349	324	12	0	48	10	33	6	0	20	5	5	7	2	417
Hutchinson	580	579	15	0	56	6	43	8	1	16	1	2	2	0	652
McCook	743	686	24	0	78	11	46	9	2	32	12	3	8	1	853
Turner	1,187	1,173	32	0	67	18	42	7	0	35	5	11	8	1	1,289
Union	4,047	3,711	39	0	491	13	368	23	1	248	0	97	8	1	4,786
Yankton	2,717	2,550	162	0	562	11	384	65	0	293	2	96	47	2	3,572
1st CIR TOTAL	20,650	18,942	938	0	3,072	150	2,091	348	7	1,140	50	383	195	13	24,862
2nd CIRCUIT															
Lincoln	3,977	3,480	341	0	526	15	274	50	4	127	1	65	10	1	4,630
Minnehaha	40,478	31,132	6,871	1	5,614	300	2,461	1,059	23	1,721	52	633	285	53	47,813
2nd CIR TOTAL	44,455	34,612	7,212	1	6,140	315	2,735	1,109	27	1,848	53	698	295	54	52,443
3rd CIRCUIT															
Beadle	2,404	2,168	168	0	334	26	221	43	4	101	12	37	24	2	2,839
Brookings	4,731	4,536	147	0	760	70	640	34	2	146	21	82	12	3	5,637
Clark	471	418	38	0	41	3	37	7	0	17	2	5	0	0	529
Codington	3,393	2,997	245	0	644	37	420	46	2	193	7	107	17	8	4,230
Deuel	604	575	32	0	42	2	40	6	0	12	0	5	1	1	658
Grant	739	718	48	0	96	25	62	18	2	34	14	11	11	0	869
Hamlin	715	665	51	0	64	2	36	10	0	13	0	6	3	0	792
Hand	509	510	15	0	32	6	30	7	0	20	2	5	1	0	561
Jerauld	318	281	16	0	27	2	17	3	0	4	2	1	1	2	349
Kingsbury	909	923	27	0	49	7	40	5	1	18	3	10	3	0	976
Lake	1,762	1,556	147	0	357	46	210	62	0	93	11	37	15	2	2,212
Miner	196	173	8	0	17	0	11	3	0	26	0	2	8	0	239
Moody	1,810	1,673	63	0	155	24	116	11	0	51	16	22	4	1	2,016
Sanborn	532	501	16	0	30	3	26	4	0	8	1	0	1	1	570
3rd CIR TOTAL	19,093	17,694	1,021	0	2,648	253	1,906	259	11	736	91	330	101	20	22,477

Table 14. Unweighted Criminal Caseload, FY2005

COUNTIES	CLASS TWO MISDEMEANOR & PETTY OFFENSES				CLASS ONE MISDEMEANOR					F E L O N Y					Total Criminal Filings
	Fil-Filings	Guilty Pleas	Dis-mis-sals	Jury Trials	Fil-ings	Pre-lim. Hrgs.	Guilty Pleas	Dis-mis-sals	Jury Trials	Fil-ings	Pre-lim. Hrgs.	Guilty Pleas	Dis-mis-sals	Jury Trials	
4th CIRCUIT															
Butte	1,069	973	119	0	211	5	57	16	1	85	2	11	11	0	1,365
Corson	227	232	6	0	12	2	7	2	0	9	4	4	1	0	248
Dewey	71	68	0	0	19	4	19	3	0	5	0	1	0	0	95
Harding	135	139	5	0	9	3	9	2	6	6	5	1	6	0	150
Lawrence	3,947	3,539	292	0	1,103	0	424	91	1	372	1	25	32	8	5,422
Meade	3,579	3,260	254	0	845	1	351	53	1	286	0	64	25	3	4,710
Perkins	257	244	40	0	58	4	47	18	0	13	5	10	4	1	328
Ziebach	97	93	1	0	9	1	5	3		1	0	1	0	0	107
4th CIR TOTAL	9,382	8,548	717	0	2,266	20	919	188	9	777	17	117	79	12	12,425
5th CIRCUIT															
Brown	5,536	5,236	355	1	886	56	607	125	1	253	28	96	62	3	6,675
Campbell	94	90	7	0	8	3	7	6	0	12	2	4	2	0	114
Day	1,037	949	43	0	101	5	65	12	0	38	3	20	6	0	1,176
Edmunds	289	269	8	0	38	3	27	6	0	16	0	3	3	0	343
Faulk	183	360	49	0	12	1	46	19	0	14	4	4	10	0	209
Marshall	418	181	9	0	72	8	12	3	0	20	3	3	2	0	510
McPherson	57	57	1	0	8	1	8	2	0	4	0	0	0	0	69
Roberts	3,496	2,908	59	1	446	35	248	61	2	179	24	51	35	3	4,121
Spink	907	814	92	0	89	1	49	21	0	30	1	9	3	2	1,026
Walworth	1,076	825	89	0	277	23	123	43	1	94	13	5	24	1	1,447
5th CIR TOTAL	13,093	11,689	712	2	1,937	136	1,192	298	4	660	78	195	147	9	15,690
6th CIRCUIT															
Bennett	583	465	438	0	187	22	67	44	0	45	10	9	15	2	815
Gregory	348	311	77	0	65	10	40	30	2	16	10	10	23	0	429
Haakon	97	92	7	0	8	4	11	5	0	9	2	2	1	0	114
Hughes	2,638	2,302	243	0	635	44	392	102	2	147	14	52	18	0	3,420
Hyde	396	358	9	0	21	16	18	2	0	5	0	1	1	0	422
Jackson	1,032	908	36	0	54	6	30	10	0	10	3	2	0	0	1,096
Jones	289	282	13	0	22	5	15	5	1	4	1	3	3	0	315
Lyman	1,451	1,376	29	0	68	12	44	5	0	22	8	13	2	0	1,541
Mellette	187	139	13	0	51	5	30	8	0	36	21	6	5	2	274
Potter	273	258	8	0	22	2	11	4	0	6	1	2	1	0	301
Stanley	731	684	24	0	68	12	40	8	0	24	5	4	0	0	823
Sully	492	467	2	0	15	2	12	2	0	12	0	1	2	0	519
Todd-Tripp	919	856	109	0	152	45	81	37	0	54	23	9	17	3	1,125
6th CIR TOTAL	9,436	8,498	1,008	0	1,368	185	791	262	5	390	98	114	88	7	11,194
7th CIRCUIT															
Custer	1,068	950	106	0	151	21	67	14	1	51	12	27	9	0	1,270
Fall River-Shanno	1,304	1,115	74	0	232	40	153	38	1	100	34	24	20	3	1,636
Pennington	24,124	20,561	2,673	2	4,280	489	2,072	559	12	1,330	231	426	226	33	29,734
7th CIR TOTAL	26,496	22,626	2,853	2	4,663	550	2,292	611	14	1,481	277	477	255	36	32,640
STATE TOTALS	142,605	122,609	14,461	5	22,094	1,609	11,926	3,075	77	7,032	664	2,314	1,160	151	171,731

Criminal Caseload

The charts below compare criminal case filings for the past five fiscal years.

A summary of traffic offenses and fines is presented in Table 17 on page 46. Misdemeanor filings have increased slightly over the past two years.

Felony Cases

Felony filings have shown an increase this past fiscal year (Chart 12) over FY2004 along with felony jury trials and guilty pleas. Class I misdemeanor jury trials continue to show a decline of the past five years (Chart 13).

Chart 12. Felony Caseload Comparisons

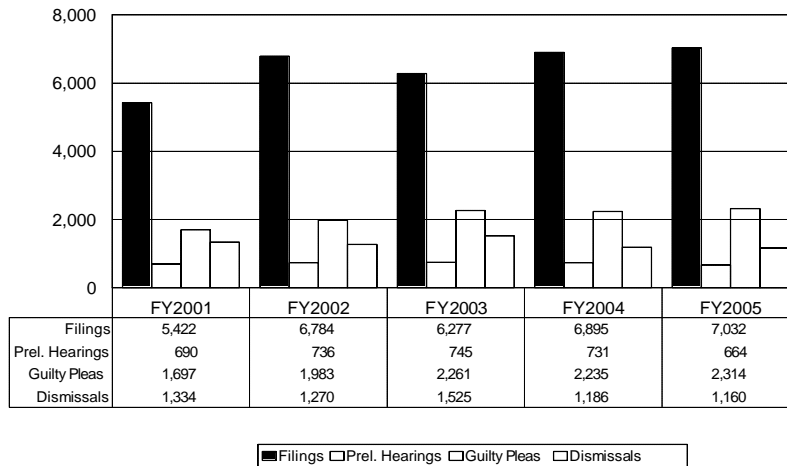


Chart 13. Five-Year Jury Trial Comparison

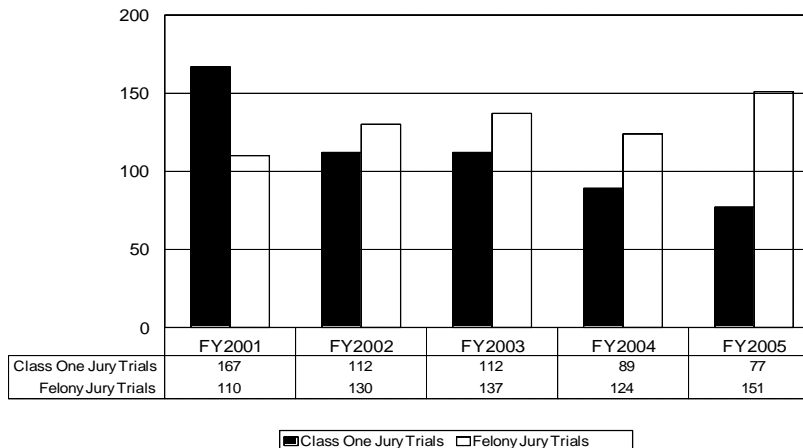
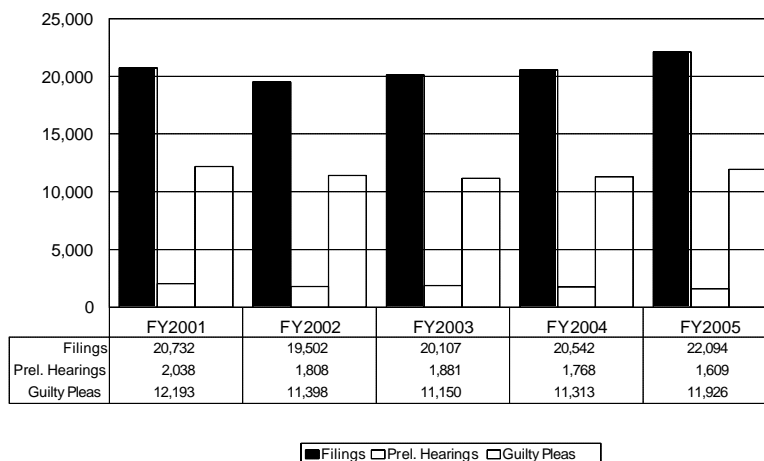


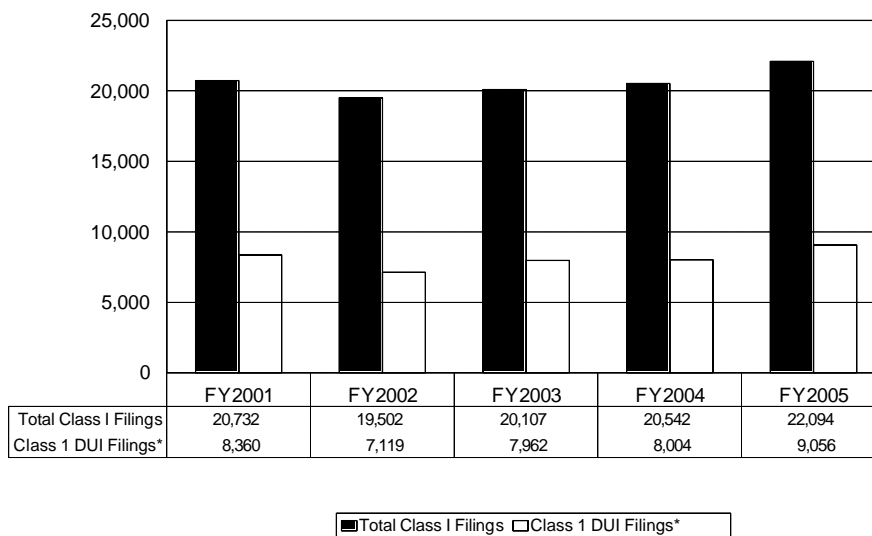
Chart 14. Class I Misdemeanor Caseload Comparison



Class 1 misdemeanor filings have shown an increase this past fiscal year (Chart 14). Chart 15 compares Total Class 1 misdemeanor filings with Class 1 misdemeanor DUI filings (first and second offenses.)

In 1987 DUI offenses accounted for 67% of Class 1 misdemeanor filings. This year class 1 DUI violations represent 41% of the total class 1 violations which has remained relatively consistent over the past several fiscal years.

Chart 15. Comparison - Total Class I Misdemeanor Filings to Class I DUI Filings



* Class 1 DUI Filings only include DUI first and second offense filings. Third and fourth offenses are charged as felonies. In FY2005 there were felony DUI filings for a total of 10,174 DUI filings.

DUI Cases

A significant percentage of Class 1 misdemeanors as well as felony cases are violations of ch. 32-33 and are referred to as DUI (driving under the influence) cases. The most common dispositions of DUI's for the past five

fiscal years are illustrated in Table 15. First and second DUI violations (DUI One and DUI Two) are Class 1 misdemeanors. Third and subsequent offenses (DUI Three and DUI Four) are felonies. Selected segments of this data are compared in Charts 16 and 17 on the following page.

Table 15. DUI VIOLATIONS SUMMARY

VIOLATION TYPE	FY2001	FY2002	FY2003	FY2004	FY2005
<u>FILINGS</u>					
DUI One	7,001	5,863	6,700	6,599	7,520
DUI Two	1,359	1,256	1,262	1,405	1,536
DUI Three	515	867	831	781	804
DUI Four	81	286	218	264	314
TOTAL	8,956	8,272	9,011	9,049	10,174
<u>GUILTY PLEAS</u>					
DUI One	5,076	4,268	4,749	4,721	5,247
DUI Two	1,120	1,044	1,077	1,152	1,300
DUI Three	474	608	715	671	642
DUI Four	62	143	190	221	254
TOTAL	6,732	6,063	6,731	6,765	7,443
<u>DISMISSALS</u>					
DUI One	1,568	1,433	1,593	1,327	1,614
DUI Two	250	240	257	254	256
DUI Three	102	148	143	139	209
DUI Four	23	70	54	58	80
TOTAL	1,943	1,891	2,047	1,778	2,159
<u>SUSPENDED IMPOSITIONS</u>					
DUI One	655	557	741	791	953
DUI Two	12	12	15	39	42
DUI Three	63	104	136	138	145
DUI Four	0	1	0	1	3
TOTAL	730	674	892	969	1,143
<u>CONVICTIONS AT TRIAL</u>					
DUI One	39	22	27	25	22
DUI Two	14	18	13	7	12
DUI Three	8	12	18	11	12
DUI Four	4	7	12	8	11
TOTAL	65	59	70	51	57
<u>ACQUITTALS AT TRIAL</u>					
DUI One	17	13	12	13	11
DUI Two	7	4	4	7	3
DUI Three	1	1	2	2	4
DUI Four	0	1	1	0	3
TOTAL	25	19	18	22	21

Many of the DUI dismissals shown in Table 15 (page 42) result from a defendant's guilty plea to a lesser charge, usually reckless driving, which is also a Class 1 misdemeanor. Such plea bargains occur when a prosecutor believes the state's evidence is inadequate for a DUI conviction and the prosecutor is willing to save the state the expense of a more time-consuming prosecution in return for the defen-

dant's guilty plea to a lesser charge. Conviction for more than one reckless driving violation within a one-year period will result in suspension of the violator's driving license for a minimum of 30 days.

Table 16 (page 44) presents DUI filings and dispositions for the current fiscal year by county and circuit.

Chart 16. DUI Filings

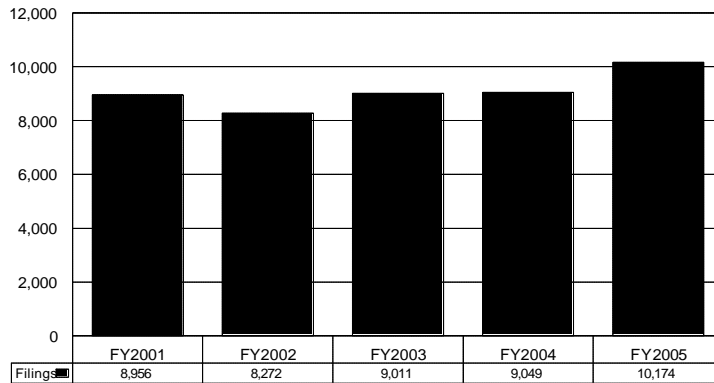


Chart 17. DUI Dispositions

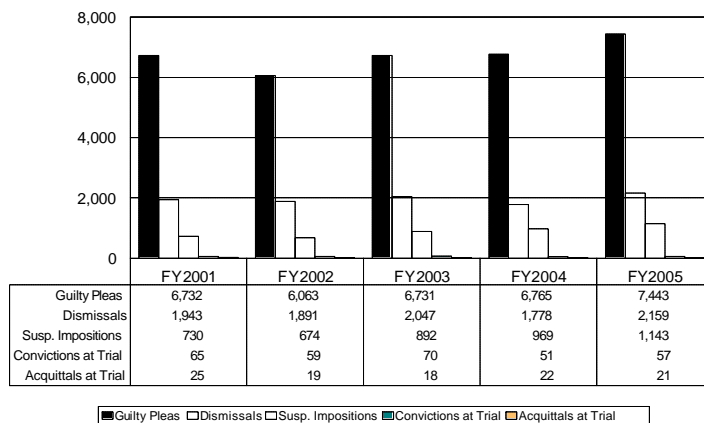


Table 16. DUI Filings and Dispositions by County - FY2005

COUNTIES:	Case Filings	Guilty Pleas	Dis-missals	Trials		Susp. Impos.*	TOTAL DISPOSITIONS
				Acqui-ttals	Convict-ions		
1st CIRCUIT							
Aurora	20	15	1	0	0	0	16
Bon Homme	22	9	11	0	2	1	23
Brule/Buffalo	99	61	36	0	0	5	102
Charles Mix	238	168	71	0	0	5	244
Clay	190	160	40	0	1	11	212
Davison	336	303	43	0	0	5	351
Douglas	15	11	5	0	0	0	16
Hanson	26	22	1	1	0	0	24
Hutchinson	23	16	4	0	0	1	21
McCook	38	20	12	0	0	0	32
Turner	29	24	5	0	0	0	29
Union	217	178	52	0	0	13	243
Yankton	250	176	56	1	1	19	253
TOTAL	1,503	1,163	337	2	4	60	1,566
2nd CIRCUIT							
Lincoln	293	182	68	1	2	54	307
Minnehaha	2,296	1,569	726	6	20	262	2,583
TOTAL	2,589	1,751	794	7	22	316	2,890
3rd CIRCUIT							
Beadle	170	154	17	0	2	1	174
Brookings	320	305	12	0	3	4	324
Clark	26	22	4	0	0	0	26
Codington	247	202	17	2	2	4	227
Deuel	23	29	2	0	0	0	31
Grant	56	38	12	0	1	1	52
Hamlin	30	24	4	0	0	0	28
Hand	18	16	2	0	0	0	18
Jerauld	13	9	1	0	1	0	11
Kingbury	35	26	8	0	0	0	34
Lake	158	125	27	1	0	3	156
Miner	9	6	3	0	0	0	9
Moody	85	67	20	1	0	2	90
Sanborn	20	14	6	0	1	0	21
TOTAL	1,210	1,037	135	4	10	15	1,201
4th CIRCUIT							
Butte	106	77	23	1	0	8	109
Corson	6	4	1	0	0	1	6
Dewey	14	12	2	0	0	1	15
Harding	6	3	2	0	0	1	6
Lawrence	617	411	82	2	5	119	619
Meade	587	349	117	1	1	99	567
Perkins	22	21	4	0	0	3	28
Ziebach	4	3	0	0	0	1	4
TOTAL	1,362	880	231	4	6	233	1,354

COUNTIES:	Case Filings	Guilty Pleas	Dis-missals	Trials		Susp. Impos.*	TOTAL DISPOSITIONS
				Acqui-ttals	Convict-ions		
5th CIRCUIT							
Brown	384	309	87	1	1	25	423
Campbell	6	4	0	0	0	1	5
Day	78	57	14	0	0	5	76
Edmunds	12	9	1	0	0	1	11
Faulk	7	7	5	0	0	0	12
Marshall	26	27	3	0	0	1	31
McPherson	7	6	0	0	0	0	6
Roberts	249	209	40	1	0	22	272
Spink	52	31	21	0	0	4	56
Walworth	118	87	17	1	1	4	110
TOTAL	939	746	188	3	2	63	1,002
6th CIRCUIT							
Bennett	40	45	6	0	1	1	53
Gregory	21	14	23	0	0	1	38
Haakon	8	7	3	0	0	1	11
Hughes	287	219	61	0	1	5	286
Hyde	13	13	0	0	0	0	13
Jackson	36	17	12	0	0	6	35
Jones	10	11	2	0	0	0	13
Lyman	38	25	1	0	0	3	29
Mellette	42	27	8	0	0	0	35
Potter	9	6	2	0	0	0	8
Stanley	30	19	3	0	0	4	26
Sully	11	6	2	0	0	0	8
Todd-Tripp	91	62	33	0	0	4	99
TOTAL	636	471	156	0	2	25	654
7th CIRCUIT							
Custer	80	45	13	0	0	32	90
Fall River-Shannon	141	101	38	0	2	23	164
Pennington	1,714	1,249	267	1	9	376	1,902
TOTAL	1,935	1,395	318	1	11	431	2,156

STATE TOTALS	Case Filings	Guilty Pleas	Dis-missals	Trials		Susp. Impos.*	TOTAL DISPOSITIONS
				Acqui-ttals	Convict-ions		
	10,174	7,443	2,159	21	57	1,143	10,823

* Suspended Imposition of Sentence

Class 2 Misdemeanors

Chart 18 shows that Class 2 misdemeanor filings and guilty pleas have remained constant over the past fiscal year.

Chart 19 shows that Class 2 misdemeanor dismissals have decreased significantly since FY2004. Of the 14,461 Class 2 dismissals reported for FY2005, 13,097 or 90.6% were for “financial responsibility” arrests. Financial responsibility arrests (SDCL 32-35-113) are made when a driver is stopped by a law enforcement officer for a traffic violation and the driver cannot produce proof of financial responsibility (usually an auto insurance card). If the defendant can later produce such proof for a clerk-magistrate, the charge is dismissed.

Some other Class 2 misdemeanor dismissals occur when a traffic case is removed from active court files because a defendant’s driver’s license has been suspended by the Office of Driver Improvement for failure to appear or pay a fine after a period of six months. In order to have a license reinstated, the defendant must have the court issue an order. Then the defendant must pay a substantial cash penalty to the Department of Commerce and Regulation. The defendant also faces the possibility of an additional criminal charge for failing to appear in court on the original violation.

Table 17 (page 46) lists Class 2 misdemeanor and petty offense traffic violations for the fiscal year. The offenses in the detailed list include those with 50 arrests or more. Those with an SDCL Code prefix of 99 are municipal ordinance violations.

Chart 18. Comparison
Class 2 Caseload Filings and Guilty Pleas

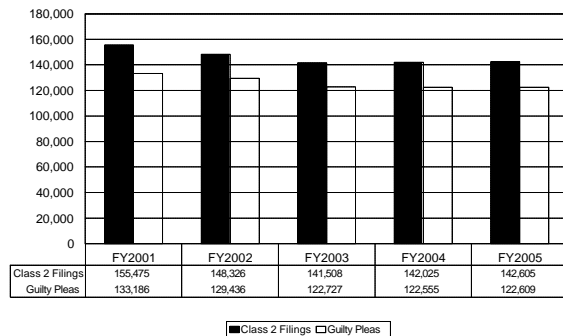
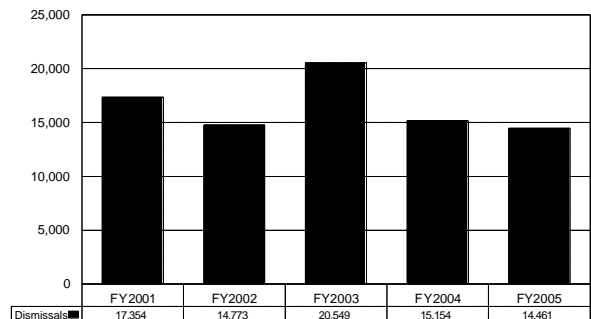


Chart 19. Comparison - Class 2 Dismissals



**Table 17. CLASS 2 MISDEMEANOR AND PETTY OFFENSE
TRAFFIC VIOLATION SUMMARY - FY2005**

OFFENSE	SDCL CODE	ARRESTS	TOTAL	OFFENSE	SDCL CODE	ARRESTS	TOTAL	
			FINES & COSTS ORDERED				FINES & COSTS ORDERED	
Speeding - State Highways	32-25-1.1	16,501	\$1,377,698	Illegal Median Crossing	32-26-9	88	\$6,506	
Speeding - Other Roadways	32-25-7	11,756	\$918,079	Film on Front Window	32-15-2.4	88	\$6,316	
Speeding - Interstate Hiway	32-25-4	9,061	\$730,412	Moving without Permit	32-9-23.3	83	\$11,376	
Speeding Combined		37,318	\$3,026,189	Illegal U-Turn	32-26-25	82	\$5,235	
Fail to Maintain Financial Responsibility	32-35-113	17,078	\$297,469	Fail to Comply with Officer	32-21-30	73	\$1,459	
Seat Belt Violation*	32-38-1	11,588	\$201,522	No Registration Receipt in Vehicle	32-5-91	73	\$1,080	
No Driver's License	32-12-22	7,186	\$326,032	Overweight Commercial Vehicle	32-9-14	70	\$11,248	
Driving with Suspended License	32-12-65	5,533	\$507,167	Vehicle with Contents Leaking	32-15-18	69	\$8,308	
Open Alcoholic Beverage Container	35-1-9.1	4,228	\$168,497	Driving Off Roads Prohibited	41-17-1(1)	63	\$4,079	
Registration Renewal Violation	32-5-2.4	3,079	\$211,859	Drive w/ Cancel License	32-12-65	61	\$3,915	
Failure to Make Proper Stop	32-29-2.1	2,457	\$185,209	Drive Vehicle W/O Proper Exhaust	32-15-17	60	\$3,762	
Construction Zone Speeding	32-25-19.1	2,033	\$278,006	Stop for School Bus	32-32-6	57	\$6,504	
Log Book/Other	49-28A-3	1,956	\$178,398	Left-Turning Vehicle	32-26-18	55	\$3,512	
Overweight on Axle	32-22-16	1,955	\$811,512	Rear Stop Lamps Required*	32-17-8	51	\$1,132	
Careless Driving	32-24-8	1,839	\$145,071					
Child Seat Restraint*	32-37-1	1,082	\$17,869	MUNICIPAL OFFENSES				
No Proper License Plates	32-5-98	888	\$44,221	Municipal Speeding	99-1-125	22,592	\$1,660,274	
Exhibition Driving	32-24-9	788	\$39,029	Fail to Obey Traffic Control Device	99-2-177	1,274	\$100,997	
Failure to Obey Traffic Device	32-28-10	563	\$39,428	Fail to Stop	99-1-57	1,169	\$98,233	
Unauthorized Use of Vehicle	32-12-74	549	\$29,262	Careless Driving	99-1-53	977	\$73,165	
Failure to Report Accident to Police	32-34-7	546	\$39,314	Municipal Speeding in School Zone	99-1-126	1,348	\$110,114	
Follow too Closely	32-26-40	440	\$35,815	Parking/Standing	99-1-4	724	\$31,035	
Under Twenty-One Driver	32-23-21	429	\$48,790	Follow too Closely	99-1-79	1,111	\$93,999	
Oversize/Overweight	32-22-52	361	\$51,304	Warning Ticket	99-1-2	797	\$16,785	
License Not in Immediate Possession*	32-12-39	320	\$3,985	Open Container	99-2-138	750	\$29,378	
Overdriving Road Conditions	32-25-3	317	\$21,115	Exhibition Driving	99-1-52	730	\$41,262	
Establishment of Speed Zones	32-25-7	262	\$19,185	Failure to Yield to Traffic	99-1-60	435	\$34,447	
Illegal Lane Change	32-26-6	255	\$14,044	Flashing Stop Light	99-1-50	501	\$28,629	
Illegal Passing	32-26-37	241	\$23,754	County Speeding	98-1-31	330	\$27,449	
Substitute Plates	32-5-103	230	\$14,126	Overdrive Road Conditions	99-1-74	246	\$18,074	
Viol Stopped Veh W/Red/Amber/Yellow	32-31-6.1	224	\$16,941	No Valid Driver's License	99-1-67	349	\$19,869	
Fail to Yield - Left Turn	32-26-19	207	\$16,138	Fail to Yield After Stop	99-1-87	207	\$16,013	
Unauthorized Driver	32-12-72	202	\$13,505	Illegal Lane Change	99-1-69	283	\$22,150	
Speeds in Excess of Those Fixed	32-25-3	201	\$14,041	Improper Right Turn	99-1-76	172	\$13,600	
Fail to Stop at Weigh Station	32-33-17	192	\$25,217	Fail to Yield From Private Driveway	99-2-281	227	\$19,163	
Throw Match or Burning Object From Veh	34-35-8	180	\$16,076	Unreasonable Epeed/Overdrive Road	99-1-78	97	\$6,620	
No Motorcycle Driver License	32-20-2	177	\$12,019	Munic. Accident Reporting	99-1-17	204	\$12,562	
Stop at Accident	32-34-4	177	\$13,359	Disobey Traffic Sign	99-1-11	281	\$19,811	
No SD Registration in Possession	32-10-34	172	\$10,654	Exhibition Driving	99-1-9	161	\$12,871	
Driving On Wrong Side of Road	32-26-1	169	\$6,302	Failure to Yield - Left Turn	99-1-89	308	\$25,119	
Fail to Yield Right of Way	32-26-13	168	\$12,753	Wrong Way/One Way	99-1-40	121	\$5,924	
Lamps not Properly Lit	32-17-4	154	\$4,232	Improper Turning	99-2-183	91	\$6,738	
Littering	34A-7-7	151	\$11,327	Illegal U-Turn	99-1-54	113	\$8,141	
Eye Protection*	32-20-4.1	147	\$2,659	Municipal Signal Violation	99-1-82	73	\$5,706	
Unsafe Backing	32-30-20	146	\$11,119	Unlicensed Vehicle on Roadway	99-1-55	92	\$7,001	
Handlebar Height*	32-20-3	141	\$2,764	Deviating	99-1-39	84	\$3,389	
Flashing Red Light	32-28-6	137	\$5,701	Illegal Left Turn	99-1-101	65	\$4,765	
Improper Highway Entry	32-26-14	126	\$10,283	Reckless Driving	99-1-41	67	\$3,494	
Failure to Yield	32-29-3	125	\$10,601					
Violate Promise to Appear	32-33-2	114	\$8,687	* Petty Offenses				
Fail to Display Commercial License	32-9-7	112	\$14,257	I. Total of Traffic Violations Listed on This Page		144,384	9,703,467	
Speeding In School Zone	32-25-14	105	\$7,954	II. Unlisted Class-two and Petty Offense Traffic Violations		1,809	\$137,552	
Possession of Commercial Driv. License	32-12A-6	101	\$8,455					
Racing on Highway	32-25-23	97	\$6,761					
Unauth. Park/Handicapped	32-30-11.4	96	\$6,341					
Trailer Chains	32-19-9	90	\$5,943					
				STATE TOTALS			144,384	\$9,703,467

**Table 18. INSUFFICIENT FUNDS CHECK VIOLATION
FILING AND DISPOSITION COMPARISON**

Year	Filings	Guilty Pleas	Trials		Dismissals	Suspended Impositions
			Convictions	Acquittals		
FY2001	5,575	3,496	46	6	1,930	24
FY2002	5,027	3,363	44	7	1,661	28
FY2003	4,554	2,899	52	12	1,988	25
FY2004	4,589	2,823	44	2	1,547	25
FY2005	4,205	2,679	56	12	1,607	18
% of Change*	-8.4%	-5.1%	27.3%	500.0%	3.9%	-28.0%

* Current FY compared to prior FY

Chart 20. Insufficient Funds Check Comparison

