

Minnehaha County Offices, Courthouse and Downtown Sioux Falls

Law Enforcement Center 320 W. 4th Street

Sioux Falls Police
Minnehaha County Sheriff
Public Entry to Jail Complex



Public Safety Building/Old Jail 500 N. Minnesota Avenue

County IT (Info. Technology)
24/7 Monitoring Program



County Administration Building 415 N. Dakota Avenue

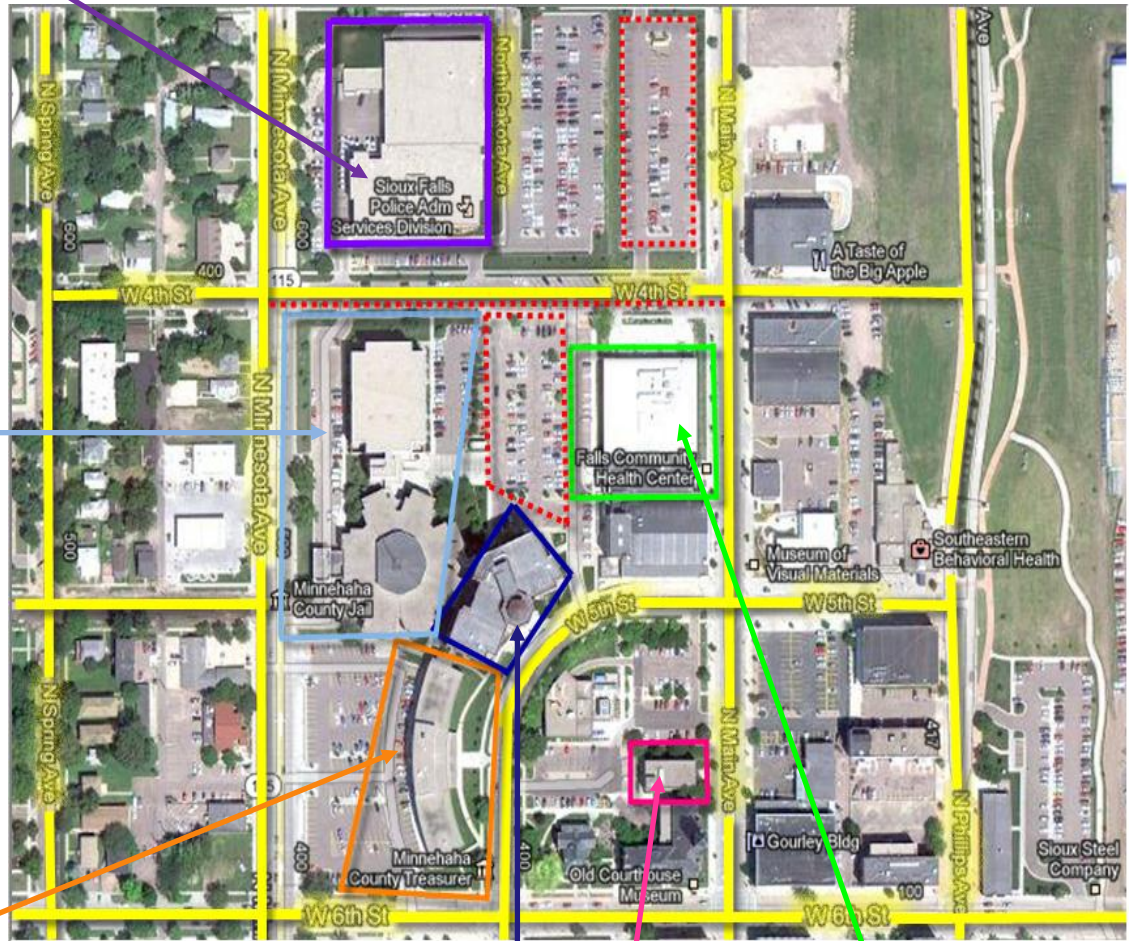
Auditor (Elections)
Treasurer (License tabs)
Commission Office & Meetings
State's Attorney's Office, Grand Jury
Equalization (Appraisals/property)
Human Resources
Planning & Zoning
Public Advocate's Office
Register of Deeds (Vital Records)



Juvenile Detention Center (JDC) 4200 South West Ave.

Highway Department 2124 E. 60th St. North

Work Release Center 1900 W. Russell Ave.



Minnehaha County Courthouse 425 N. Dakota Avenue

Clerk of Courts
Circuit & Magistrate Judges
All Courtrooms
Court Services (Probation)
2nd Circuit Court Administration



Old Courthouse North Annex 413 N. Main Avenue

Public Defender



Siouxland Health & Human Services 521 N. Main Avenue

Human Services
Veteran Services
Sioux Falls Health Department



Parking

Public parking areas are marked with red dotted lines. A two-hour limit applies to county parking lots. **To avoid a parking ticket after two hours, jurors must display their temporary parking passes in their windshields.** In addition to the county lots, free daytime parking is also available along 4th Street and a number of other nearby unrestricted streets without parking meters.