

Table 14. Unweighted Criminal Caseload, FY2003

COUNTIES	CLASS TWO MISDEMEANOR & PETTY OFFENSES				CLASS ONE MISDEMEANOR					FELONY					Total Criminal Filings
	Fil-ings	Guilty Pleas	Dis- mis- sals	Jury Trials	Fil-ings	Pre- lim. Hrgs.	Guilty Pleas	Dis- mis- sals	Jury Trials	Fil-ings	Pre- lim. Hrgs.	Guilty Pleas	Dis- mis- sals	Jury Trials	
<b>1st CIRCUIT</b>															
Aurora	356	333	16	0	46	10	42	6	1	19	3	8	2	0	421
Bon Homme	922	806	28	0	86	5	55	12	0	40	2	5	6	0	1,048
Brule-Buffalo	1,013	884	55	0	123	18	84	28	2	47	7	5	8	2	1,183
Charles Mix	1,609	1,436	48	0	312	27	225	63	0	95	19	23	48	1	2,016
Clay	1,764	1,711	89	0	279	2	269	19	3	91	1	25	18	2	2,134
Davison	3,657	2,926	556	0	561	41	393	103	2	183	3	67	46	2	4,401
Douglas	336	313	14	0	20	0	16	10	0	5	0	1	6	0	361
Hanson	215	212	13	0	39	6	19	10	2	22	7	6	5	1	276
Hutchinson	500	494	7	0	56	8	45	4	0	14	0	5	2	3	570
McCook	717	623	37	0	50	14	33	11	0	27	3	4	11	0	794
Turner	1,303	1,176	38	0	83	25	62	18	0	45	8	13	7	2	1,431
Union	5,618	5,448	94	0	538	14	394	44	0	236	9	84	13	0	6,392
Yankton	3,599	3,227	248	0	577	4	425	81	0	259	6	110	72	6	4,435
<b>1st CIR TOTAL</b>	<b>21,609</b>	<b>19,589</b>	<b>1,243</b>	<b>0</b>	<b>2,770</b>	<b>174</b>	<b>2,062</b>	<b>409</b>	<b>10</b>	<b>1,083</b>	<b>68</b>	<b>356</b>	<b>244</b>	<b>19</b>	<b>25,462</b>
<b>2nd CIRCUIT</b>															
Lincoln	3,872	3,428	340	1	493	9	248	64	3	119	1	42	25	0	4,484
Minnehaha	35,964	27,867	11,480	0	4,781	255	2,129	1,317	18	1,340	31	459	366	42	42,085
<b>2nd CIR TOTAL</b>	<b>39,836</b>	<b>31,295</b>	<b>11,820</b>	<b>1</b>	<b>5,274</b>	<b>264</b>	<b>2,377</b>	<b>1,381</b>	<b>21</b>	<b>1,459</b>	<b>32</b>	<b>501</b>	<b>391</b>	<b>42</b>	<b>46,569</b>
<b>3rd CIRCUIT</b>															
Beadle	2,378	2,202	142	0	306	48	230	40	2	124	22	71	41	2	2,808
Brookings	4,577	4,344	261	0	759	81	635	46	4	142	23	79	29	0	5,478
Clark	569	546	26	0	41	6	40	8	0	7	1	2	4	0	617
Codington	4,117	3,685	349	0	552	67	396	44	4	164	25	85	25	5	4,833
Deuel	819	769	31	0	41	4	37	3	0	27	2	15	6	0	887
Grant	930	901	60	0	88	16	72	12	2	28	8	12	9	1	1,046
Hamlin	834	789	52	0	60	8	46	12	0	14	2	6	3	0	908
Hand	542	514	26	0	47	3	23	14	0	8	0	3	2	0	597
Jerauld	328	282	11	0	40	7	22	4	2	9	3	4	0	0	377
Kingsbury	1,305	1,221	62	0	51	10	44	9	0	15	3	6	1	1	1,371
Lake	1,408	1,283	133	0	271	39	156	58	3	50	4	23	13	1	1,729
Miner	167	139	15	0	16	1	15	2	0	11	1	1	11	2	194
Moody	2,201	2,130	106	0	202	53	131	21	0	55	24	36	7	0	2,458
Sanborn	332	313	23	0	26	1	16	5	0	12	1	1	8	0	370
<b>3rd CIR TOTAL</b>	<b>20,507</b>	<b>19,118</b>	<b>1,297</b>	<b>0</b>	<b>2,500</b>	<b>344</b>	<b>1,863</b>	<b>278</b>	<b>17</b>	<b>666</b>	<b>119</b>	<b>344</b>	<b>159</b>	<b>12</b>	<b>23,673</b>

Table 14. Unweighted Criminal Caseload, FY2003

COUNTIES	CLASS TWO MISDEMEANOR & PETTY OFFENSES				CLASS ONE MISDEMEANOR					FELONY					Total Criminal Filings
	Fil-Filings	Guilty Pleas	Dis-mis-sals	Jury Trials	Fil-ings	Pre-lim. Hrgs.	Guilty Pleas	Dis-mis-sals	Jury Trials	Fil-ings	Pre-lim. Hrgs.	Guilty Pleas	Dis-mis-sals	Jury Trials	
<b>4th CIRCUIT</b>															
Butte	1,253	1,176	95	0	202	2	113	50	1	90	0	24	28	1	1,545
Corson	174	171	1	0	23	5	19	2	1	4	0	2	0	0	201
Dewey	99	99	6	0	17	0	12	1	0	7	2	3	1	0	123
Harding	82	68	3	0	6	0	6	3	0	4	1	1	0	1	92
Lawrence	3,436	3,159	577	1	911	22	564	338	11	319	0	93	99	9	4,666
Meade	5,404	5,097	305	0	814	18	535	102	4	233	2	89	37	3	6,451
Perkins	391	355	7	0	71	19	50	11	1	17	3	8	1	1	479
Ziebach	103	101	0	0	6	2	6	1	0	5	1	0	0	0	114
<b>4th CIR TOTAL</b>	<b>10,942</b>	<b>10,226</b>	<b>994</b>	<b>1</b>	<b>2,050</b>	<b>68</b>	<b>1,305</b>	<b>508</b>	<b>18</b>	<b>679</b>	<b>9</b>	<b>220</b>	<b>166</b>	<b>15</b>	<b>13,671</b>
<b>5th CIRCUIT</b>															
Brown	6,934	6,459	515	0	995	72	617	143	7	250	21	78	64	4	8,179
Campbell	173	166	4	0	13	1	11	0	0	11	1	0	0	0	197
Day	1,015	992	37	0	123	4	69	36	0	47	2	16	6	0	1,185
Edmunds	483	471	14	0	56	1	42	8	0	17	2	0	5	0	556
Faulk	537	509	26	0	29	3	18	6	0	6	1	2	0	0	572
Marshall	369	335	47	0	85	11	52	16	0	28	1	11	8	0	482
McPherson	81	79	2	0	5	0	3	1	0	9	0	0	1	0	95
Roberts	3,020	2,983	490	0	323	35	179	85	0	151	29	43	54	2	3,494
Spink	1,213	1,042	119	0	76	3	57	6	0	30	1	9	7	0	1,319
Walworth	1,912	1,763	50	0	239	10	191	21	2	83	16	14	12	0	2,234
<b>5th CIR TOTAL</b>	<b>15,737</b>	<b>14,799</b>	<b>1,304</b>	<b>0</b>	<b>1,944</b>	<b>140</b>	<b>1,239</b>	<b>322</b>	<b>9</b>	<b>632</b>	<b>74</b>	<b>173</b>	<b>157</b>	<b>6</b>	<b>18,313</b>
<b>6th CIRCUIT</b>															
Bennett	506	409	69	0	168	43	52	43	0	59	19	6	18	0	733
Gregory	355	313	25	0	58	16	35	1	0	19	6	8	2	1	432
Haakon	257	242	10	0	41	7	34	3	0	11	3	2	5	0	309
Hughes	2,674	2,553	285	0	499	65	323	105	0	141	31	56	33	5	3,314
Hyde	171	167	12	0	14	17	12	2	1	11	3	1	1	1	196
Jackson	956	869	165	0	58	11	56	75	0	24	1	8	11	1	1,038
Jones	388	374	11	0	19	3	19	3	0	10	7	7	0	0	417
Lyman	1,325	1,201	36	0	89	11	78	5	3	40	14	17	7	0	1,454
Mellette	281	213	39	0	69	12	45	10	1	32	12	6	12	1	382
Potter	563	475	9	0	31	6	26	3	0	8	1	4	2	0	602
Stanley	1,155	1,047	50	0	86	31	57	6	1	17	6	13	4	0	1,258
Sully	327	318	16	0	51	11	42	9	0	15	3	3	6	0	393
Todd-Tripp	959	829	62	0	118	28	62	8	0	54	18	22	13	3	1,131
<b>6th CIR TOTAL</b>	<b>9,917</b>	<b>9,010</b>	<b>789</b>	<b>0</b>	<b>1,301</b>	<b>261</b>	<b>841</b>	<b>273</b>	<b>6</b>	<b>441</b>	<b>124</b>	<b>153</b>	<b>114</b>	<b>12</b>	<b>11,659</b>
<b>7th CIRCUIT</b>															
Custer	1,553	1,398	85	0	132	42	46	22	3	57	21	9	18	1	1,742
Fall River-Shannon	1,650	1,355	93	0	295	52	92	38	3	97	29	25	20	6	2,042
Pennington	19,757	15,937	2,924	0	3,841	536	1,325	953	25	1,163	269	480	256	24	24,761
<b>7th CIR TOTAL</b>	<b>22,960</b>	<b>18,690</b>	<b>3,102</b>	<b>0</b>	<b>4,268</b>	<b>630</b>	<b>1,463</b>	<b>1,013</b>	<b>31</b>	<b>1,317</b>	<b>319</b>	<b>514</b>	<b>294</b>	<b>31</b>	<b>28,545</b>
<b>STATE TOTALS</b>	<b>141,508</b>	<b>122,727</b>	<b>20,549</b>	<b>2</b>	<b>20,107</b>	<b>1,881</b>	<b>11,150</b>	<b>4,184</b>	<b>112</b>	<b>6,277</b>	<b>745</b>	<b>2,261</b>	<b>1,525</b>	<b>137</b>	<b>167,892</b>

## Criminal Caseload

The charts below compare criminal case filings for the past five fiscal years.

A summary of traffic offenses and fines is presented in Table 17 on page 46. The number of Class 2 misdemeanor filings have shown a slight decline this past year but Class 1 misdemeanor filings have shown a slight increase in FY2003.

## Felony Cases

Felony filings have shown a slight decrease this past fiscal year (Chart 12) but the number of Felony jury trials, preliminary hearings and guilty pleas have shown a slight increase. Class I misdemeanor trials have remained steady this past year (Chart 13).

Chart 12. Felony Caseload Comparisons

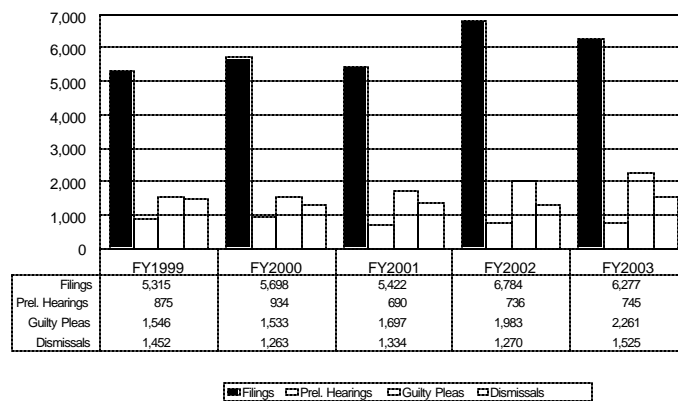
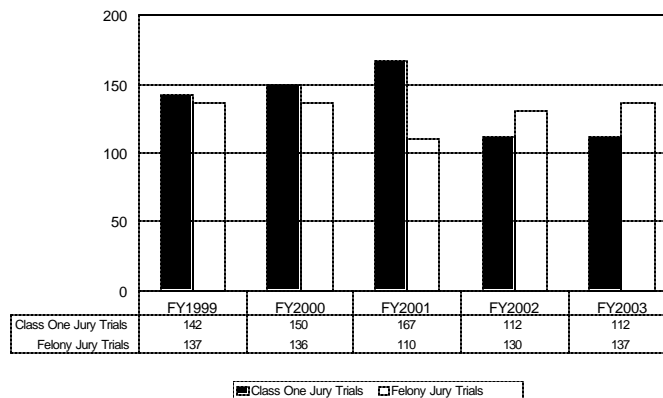
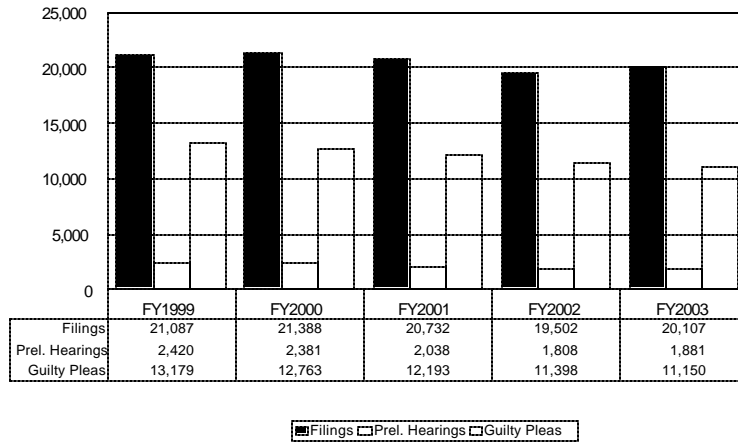


Chart 13. Five-Year Jury Trial Comparison



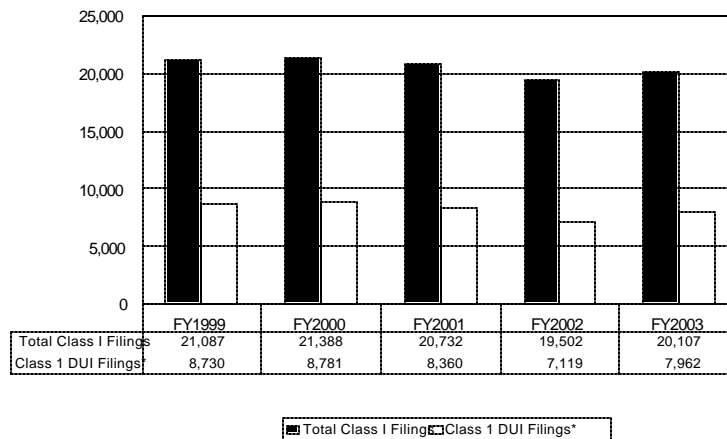
**Chart 14. Class I Misdemeanor Caseload Comparison**



Class 1 misdemeanor filings have shown a slight increase this past fiscal year (Chart 14). Chart 15 compares Total Class 1 misdemeanor filings with Class 1 misdemeanor DUI filings (first and second offenses.)

In 1987 DUI offenses accounted for 67% of Class 1 misdemeanor filings. This year class 1 DUI violations represent 40.0% of the total which has remained relatively consistent over the past several fiscal years.

**Chart 15. Comparison - Total Class I Misdemeanor Filings to Class I DUI Filings**



\* Class 1 DUI Filings only include DUI first and second offense filings. Third and fourth offenses are charged as felonies. In FY2003 there were an additional felony DUI filings for a total of 9,011 DUI filings.

## DUI Cases

A significant percentage of Class 1 misdemeanors as well as felony cases are violations of ch. 32-33 and are referred to as DUI (driving under the influence) cases. The most common dispositions of DUI's for the past five

fiscal years are illustrated in Table 15. First and second DUI violations (DUI One and DUI Two) are Class 1 misdemeanors. Third and subsequent offenses (DUI Three and DUI Four) are felonies. Selected segments of this data are compared in Charts 16 and 17 on the following page.

**Table 15. DUI VIOLATIONS SUMMARY**

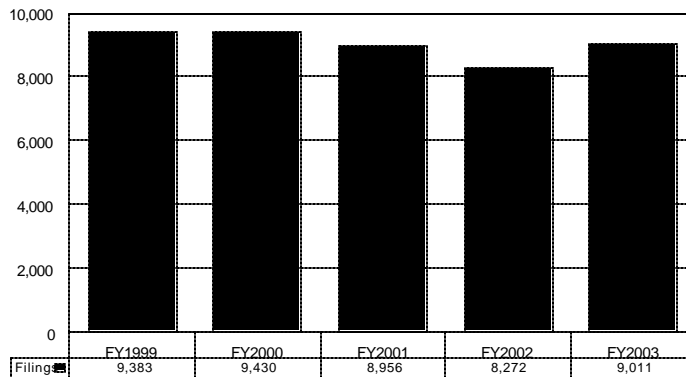
VIOLATION TYPE	FY1999	FY2000	FY2001	FY2002	FY2003
<b><u>FILINGS</u></b>					
DUI One	7,355	7,456	7,001	5,863	6,700
DUI Two	1,375	1,325	1,359	1,256	1,262
DUI Three	568	572	515	867	831
DUI Four	85	77	81	286	218
<b>TOTAL</b>	<b>9,383</b>	<b>9,430</b>	<b>8,956</b>	<b>8,272</b>	<b>9,011</b>
<b><u>GUILTY PLEAS</u></b>					
DUI One	5,237	5,230	5,076	4,268	4,749
DUI Two	1,066	1,036	1,120	1,044	1,077
DUI Three	466	455	474	608	715
DUI Four	67	59	62	143	190
<b>TOTAL</b>	<b>6,836</b>	<b>6,780</b>	<b>6,732</b>	<b>6,063</b>	<b>6,731</b>
<b><u>DISMISSALS</u></b>					
DUI One	1,800	1,735	1,568	1,433	1,593
DUI Two	312	297	250	240	257
DUI Three	124	135	102	148	143
DUI Four	28	26	23	70	54
<b>TOTAL</b>	<b>2,264</b>	<b>2,193</b>	<b>1,943</b>	<b>1,891</b>	<b>2,047</b>
<b><u>SUSPENDED IMPOSITIONS</u></b>					
DUI One	596	826	655	557	741
DUI Two	20	21	12	12	15
DUI Three	58	54	63	104	136
DUI Four	1	1	0	1	0
<b>TOTAL</b>	<b>668</b>	<b>902</b>	<b>730</b>	<b>674</b>	<b>892</b>
<b><u>CONVICTIONS AT TRIAL</u></b>					
DUI One	31	37	39	22	27
DUI Two	17	22	14	18	13
DUI Three	17	9	8	12	18
DUI Four	4	4	4	7	12
<b>TOTAL</b>	<b>69</b>	<b>72</b>	<b>65</b>	<b>59</b>	<b>70</b>
<b><u>ACQUITTALS AT TRIAL</u></b>					
DUI One	18	12	17	13	12
DUI Two	5	5	7	4	4
DUI Three	1	1	1	1	2
DUI Four	0	0	0	1	1
<b>TOTAL</b>	<b>24</b>	<b>18</b>	<b>25</b>	<b>19</b>	<b>18</b>

Many of the DUI dismissals shown in Table 15 (page 42) result from a defendant's guilty plea to a lesser charge, usually reckless driving, which is also a Class 1 misdemeanor. Such plea bargains occur when a prosecutor believes the state's evidence is inadequate for a DUI conviction and the prosecutor is willing to save the state the expense of a more time-consuming prosecution in

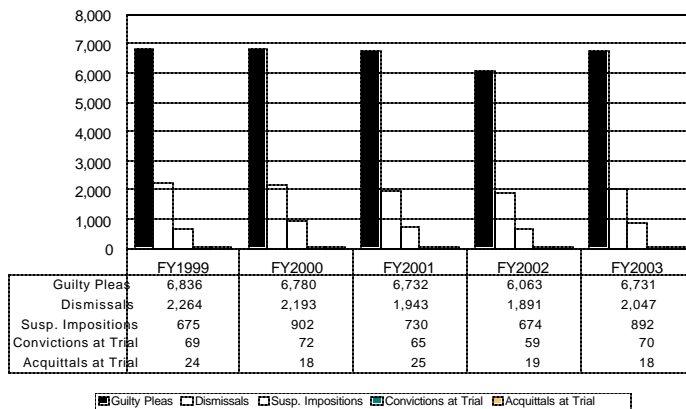
return for the defendant's guilty plea to a lesser charge. Conviction for more than one reckless driving violation within a one-year period will result in suspension of the violator's driving license for a minimum of 30 days.

Table 16 (page 44) presents DUI filings and dispositions for the current fiscal year by county and circuit.

**Chart 16. DUI Filings**



**Chart 17. DUI Dispositions**



**Table 16. DUI Filings and Dispositions by County - FY2003**

COUNTIES:	Case Filings	Guilty Pleas	Dis-missals	Trials		Susp. Impos.*	TOTAL DISPOSITIONS
				Acqui-ttals	Convict-ions		
1st CIRCUIT							
Aurora	15	17	1	0	1	0	19
Bon Homme	32	17	14	0	0	1	32
Brule/Buffalo	65	30	23	0	2	2	57
Charles Mix	163	126	47	0	0	0	173
Clay	143	125	37	0	1	6	169
Davison	228	199	35	0	0	6	240
Douglas	10	6	6	0	0	0	12
Hanson	20	12	8	0	1	3	24
Hutchinson	22	15	6	0	0	1	22
McCook	26	18	8	0	0	0	26
Turner	26	26	6	0	1	0	33
Union	206	141	64	0	0	7	212
Yankton	259	215	36	0	0	12	263
<b>TOTAL</b>	<b>1,215</b>	<b>947</b>	<b>291</b>	<b>0</b>	<b>6</b>	<b>38</b>	<b>1,282</b>
2nd CIRCUIT							
Lincoln	309	172	91	0	1	62	326
Minnehaha	1,719	1,319	428	5	13	212	1,977
<b>TOTAL</b>	<b>2,028</b>	<b>1,491</b>	<b>519</b>	<b>5</b>	<b>14</b>	<b>274</b>	<b>2,303</b>
3rd CIRCUIT							
Beadle	161	152	17	1	1	2	173
Brookings	366	330	23	1	2	2	358
Clark	20	20	4	0	0	0	24
Codington	278	247	19	3	3	2	274
Deuel	20	20	2	0	0	0	22
Grant	42	39	6	0	1	0	46
Hamlin	29	33	1	0	0	0	34
Hand	23	15	4	0	0	1	20
Jerauld	17	14	4	0	0	0	18
Kingbury	23	26	4	0	0	1	31
Lake	110	89	16	0	2	0	107
Miner	5	6	0	0	0	0	6
Moody	101	70	38	0	1	0	109
Sanborn	10	4	2	0	0	0	6
<b>TOTAL</b>	<b>1,205</b>	<b>1,065</b>	<b>140</b>	<b>5</b>	<b>10</b>	<b>8</b>	<b>1,228</b>
4th CIRCUIT							
Butte	91	57	35	0	2	7	101
Corson	19	18	1	1	0	1	21
Dewey	19	13	1	0	0	3	17
Harding	4	4	0	0	0	0	4
Lawrence	468	319	116	1	7	66	509
Meade	479	264	147	1	3	75	490
Perkins	41	25	7	0	1	7	40
Ziebach	3	3	2	0	0	0	5
<b>TOTAL</b>	<b>1,124</b>	<b>703</b>	<b>309</b>	<b>3</b>	<b>13</b>	<b>159</b>	<b>1,187</b>

COUNTIES:	Case Filings	Guilty Pleas	Dis-missals	Trials		Susp. Impos.*	TOTAL DISPOSITIONS
				Acqui-ttals	Convict-ions		
5th CIRCUIT							
Brown	451	298	114	0	4	19	435
Campbell	9	5	4	0	0	0	9
Day	81	58	12	0	0	5	75
Edmunds	12	9	3	0	0	3	15
Faulk	20	11	7	0	0	0	18
Marshall	49	36	12	0	0	2	50
McPherson	1	1	0	0	0	0	1
Roberts	170	137	38	0	2	25	202
Spink	42	22	12	0	0	0	34
Walworth	108	93	3	1	1	5	103
<b>TOTAL</b>	<b>943</b>	<b>670</b>	<b>205</b>	<b>1</b>	<b>7</b>	<b>59</b>	<b>942</b>
6th CIRCUIT							
Bennett	94	67	36	0	0	0	103
Gregory	33	22	13	0	0	1	36
Haakon	31	23	6	0	0	2	31
Hughes	244	211	36	0	1	6	254
Hyde	7	4	1	0	0	1	6
Jackson	37	31	35	0	0	1	67
Jones	11	8	5	0	0	1	14
Lyman	35	34	2	0	2	2	40
Mellette	54	35	14	0	0	0	49
Potter	18	15	2	0	0	0	17
Stanley	47	34	10	1	0	0	45
Sully	15	9	8	0	0	0	17
Todd-Tripp	71	56	24	0	0	3	83
<b>TOTAL</b>	<b>697</b>	<b>549</b>	<b>192</b>	<b>1</b>	<b>3</b>	<b>17</b>	<b>762</b>
7th CIRCUIT							
Custer	64	25	15	0	1	17	58
Fall River-Shannon	189	117	32	0	0	39	188
Pennington	1,546	1,164	344	3	17	280	1,808
<b>TOTAL</b>	<b>1,799</b>	<b>1,306</b>	<b>391</b>	<b>3</b>	<b>18</b>	<b>336</b>	<b>2,054</b>

STATE TOTALS	Case Filings	Guilty Pleas	Dis-missals	Trials		Susp. Impos.*	TOTAL DISPOSITIONS
				Acqui-ttals	Convict-ions		
	9,011	6,731	2,047	18	71	891	9,758

\* Suspended Imposition of Sentence

## Class 2 Misdemeanors

Chart 18 shows that Class 2 misdemeanor filings and guilty pleas have shown slight decreases over the past fiscal year.

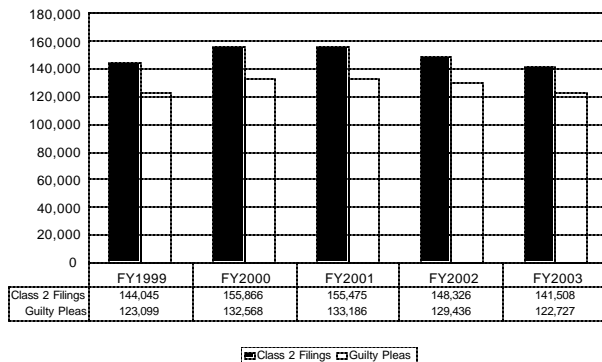
Chart 19 shows that Class 2 misdemeanor dismissals have increased significantly from FY2002. Of the 20,549 dismissals reported for FY2003, 16,105 or 78.4% were for “financial responsibility” arrests. Financial responsibility arrests are made when a driver is stopped by a law enforcement officer for a traffic violation and the driver cannot produce proof of financial responsibility (usually an auto insurance card). If the defendant can later produce such proof for a clerk-magistrate, the charge is dismissed.

Some other Class 2 misdemeanor dismissals occur when a traffic case is re-

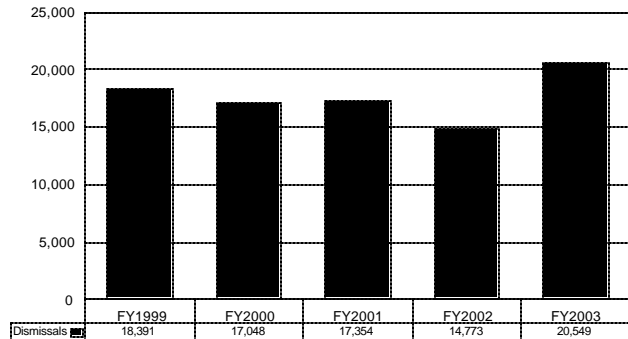
moved from active court files because a defendant’s driver’s license has been suspended by the Office of Driver Improvement for failure to appear or pay a fine after a period of six months. In order to have a license reinstated, the defendant must have the court issue an order. Then the defendant must pay a substantial cash penalty to the Department of Commerce and Regulation. The defendant also faces the possibility of an additional criminal charge for failing to appear in court on the original violation.

Table 17 (page 46) lists Class 2 misdemeanor and petty offense traffic violations for the fiscal year. The offenses in the detailed list include those with 50 arrests or more. Those with an SDCL Code prefix of 99 are municipal ordinance violations.

**Chart 18. Comparison  
Class 2 Caseload Filings and Guilty Pleas**



**Chart 19. Comparison -Class 2 Dismissals**





**Table 17. CLASS 2 MISDEMEANOR AND PETTY OFFENSE  
TRAFFIC VIOLATION SUMMARY - FY2003**

OFFENSE	SDCL CODE	ARRESTS	TOTAL	OFFENSE	SDCL CODE	ARRESTS	TOTAL
			FINES & COSTS ORDERED				FINES & COSTS ORDERED
Speeding - State Highways	32-25-1.1	18,641	\$1,504,451	Racing on Highway	32-25-23	89	\$6,848
Speeding - Other Roadways	32-25-7	9,562	\$700,860	Carry Dangling Object Between Driver	32-15-6	89	\$1,590
Speeding - Interstate Hiway	32-25-4	7,639	\$561,985	Operate Improper Vehicle	32-21-27	88	\$5,068
<b>Speeding Combined</b>		<b>35,842</b>	<b>\$2,767,296</b>	Drive w/ Cancel License	32-12-65	85	\$5,179
Fail to Maintain Financial Responsibility	32-35-113	16,103	\$297,441	Fail to Comply with Officer	32-21-30	81	\$2,295
Seat Belt Violation*	32-38-1	10,362	\$184,906	Illegal U-Turn	32-26-25	80	\$3,590
Log Book/Other	49-28A-3	8,024	\$677,418	Construction Zone Speeding	32-25-19.1	68	\$7,947
No Driver's License	32-12-22	6,612	\$370,339	Rear Stop Lamps Required*	32-17-8	70	\$1,301
Driving with Suspended License	32-12-65	5,429	\$515,950	Overwidth Vehicle	32-22-3	66	\$8,382
Open Alcoholic Beverage Container	35-1-9.1	3,833	\$148,026	Vehicle with Contents Leaking	32-15-18	57	\$6,655
Registration Renewal Violation	32-5-2.4	3,594	\$237,795	Speed in School Zone	32-25-14	62	\$4,775
Overweight on Axle	32-22-16	2,705	\$1,151,134	Improper Operation While Overtaking	32-26-26	61	\$3,406
Failure to Make Proper Stop	32-29-2.1	2,120	\$146,367	Drive Vehicle W/O Proper Exhaust	32-15-17	59	\$3,593
Careless Driving	32-24-8	1,778	\$128,381	Left-Turning Vehicle	32-26-18	59	\$3,007
No Proper License Plates	32-5-98	1,062	\$66,377	Driving Off Roads Prohibited	41-17-1(1)	51	\$3,705
Child Seat Restraint*	32-37-1	973	\$17,693				
Exhibition Driving	32-24-9	896	\$44,296	<b>MUNICIPAL OFFENSES</b>			
Failure to Obey Traffic Device	32-28-10	790	\$53,956	Municipal Speeding	99-1-125	15,275	\$1,061,699
Unauthorized Use of Vehicle	32-12-74	612	\$30,585	Fail to Obey Traffic Control Device	99-2-177	1,508	\$114,680
Failure to Report Accident to Police	32-34-7	589	\$45,657	Follow too Closely	99-1-79	1,083	\$84,855
Overweight/Overweight	32-22-52	563	\$76,837	Fail to Stop	99-1-57	1,012	\$74,460
Under Twenty-One Driver	32-23-21	436	\$54,921	Municipal Speeding in School Zone	99-1-126	1,008	\$76,157
Fail to Stop at Weigh Station	32-33-17	429	\$54,195	Parking/Standing	99-1-4	1,002	\$43,933
No SD Registration in Possession	32-10-34	420	\$30,886	Warning Ticket	99-1-2	923	\$28,202
Follow too Closely	32-26-40	410	\$29,558	Careless Driving	99-1-53	770	\$54,481
Overdriving Road Conditions	32-25-3	402	\$26,495	Open Container	99-2-138	735	\$33,946
Fail to Yield - Left Turn	32-26-19	317	\$17,538	Exhibition Driving	99-1-52	676	\$34,562
Substitute Plates	32-5-103	280	\$18,482	Failure to Yield to Traffic	99-1-60	614	\$39,193
Illegal Passing	32-26-37	268	\$23,975	County Speeding	98-1-31	482	\$37,433
Fail to Display Commercial License	32-9-7	228	\$27,450	Improper Right Turn	99-1-76	275	\$19,594
Possession of Commercial Driv. License	32-12A-6	228	\$18,929	Flashing Stop Light	99-1-50	271	\$14,802
Speeds in Excess of Those Fixed	32-25-3	222	\$15,281	No Valid Driver's License	99-1-67	263	\$17,263
Fail to Yield Right of Way	32-26-13	205	\$15,197	Disobey Traffic Sign	99-1-11	238	\$17,512
Moving without Permit	32-9-23.3	197	\$25,862	Fail to Yield From Private Driveway	99-2-281	232	\$18,073
License Not in Immediate Possession*	32-12-39	196	\$2,449	Exhibition Driving	99-1-9	209	\$16,283
Flashing Red Light	32-28-6	181	\$8,366	Illegal Lane Change	99-1-69	205	\$15,326
Driving On Wrong Side of Road	32-26-1	180	\$8,121	Fail to Yield After Stop	99-1-87	197	\$14,722
Eye Protection*	32-20-4.1	176	\$3,083	Overdrive Road Conditions	99-1-74	194	\$14,215
No Motorcycle Driver License	32-20-2	173	\$10,267	Unreasonable Epeed/Overdrive Road	99-1-78	187	\$11,844
Throw Match or Burning Object From Vehic	34-35-8	172	\$15,090	Munic. Accident Reporting	99-1-17	140	\$7,369
Illegal Lane Change	32-26-6	164	\$9,532	Failure to Yield - Left Turn	99-1-89	137	\$8,152
Unsafe Backing	32-30-20	159	\$11,444	Wrong Way/One Way	99-1-40	133	\$6,544
Trailer Chains	32-19-9	158	\$9,201	Illegal U-Turn	99-1-54	128	\$6,525
Unauthorized Driver	32-12-72	157	\$10,088	Improper Turning	99-2-183	105	\$6,627
Stop at Accident	32-34-4	149	\$9,784	Illegal Left Turn	99-1-101	97	\$5,159
Overweight Commercial Vehicle	32-9-14	148	\$19,036	Cutting Corners	99-1-58	89	\$4,599
Littering	34A-7-7	130	\$7,728	Avoid Traffic Signal	99-1-15	79	\$5,654
Failure to Yield	32-29-3	124	\$9,084	Municipal Signal Violation	99-1-82	76	\$5,286
Violate Promise to Appear	32-33-2	124	\$8,175	Unlicensed Vehicle on Roadway	99-1-55	58	\$3,797
Stop for School Bus	32-32-6	120	\$12,548	Reckless Driving	99-1-41	52	\$2,947
Illegal Median Crossing	32-26-9	111	\$8,007	Driving on Wrong Side of Road	99-1-77	50	\$3,116
Handlebar Height*	32-20-3	101	\$1,900				
Improper Highway Entry	32-26-14	98	\$6,998	* Petty Offenses			
Lamps not Properly Lit	32-17-4	97	\$3,217	I. Total of Traffic Violations Listed on This Page		138,604	9,477,715
No Registration Receipt in Vehicle	32-5-91	95	\$1,894	II. Unlisted Class-two and Petty Offense Traffic Violations		1,923	\$135,869
Unauth. Park/Handicapped	32-30-11.4	94	\$6,134				
<b>STATE TOTALS</b>						<b>140,527</b>	<b>\$9,613,584</b>

**Table 18. INSUFFICIENT FUNDS CHECK VIOLATION  
FILING AND DISPOSITION COMPARISON**

Year	Filings	Guilty Pleas	Trials		Dismissals	Suspended Impositions
			Convictions	Acquittals		
<b>FY1999</b>	5,236	3,110	56	17	2,134	31
<b>FY2000</b>	5,886	3,300	58	10	1,620	22
<b>FY2001</b>	5,575	3,496	46	6	1,930	24
<b>FY2002</b>	5,027	3,363	44	7	1,661	28
<b>FY2003</b>	4,554	2,899	52	12	1,988	25
<b>% of Change*</b>	<b>-9.4%</b>	<b>-13.8%</b>	<b>18.2%</b>	<b>71.4%</b>	<b>19.7%</b>	<b>-10.7%</b>

\* Current FY compared to prior FY

**Chart 20. Insufficient Funds Check Comparison**

