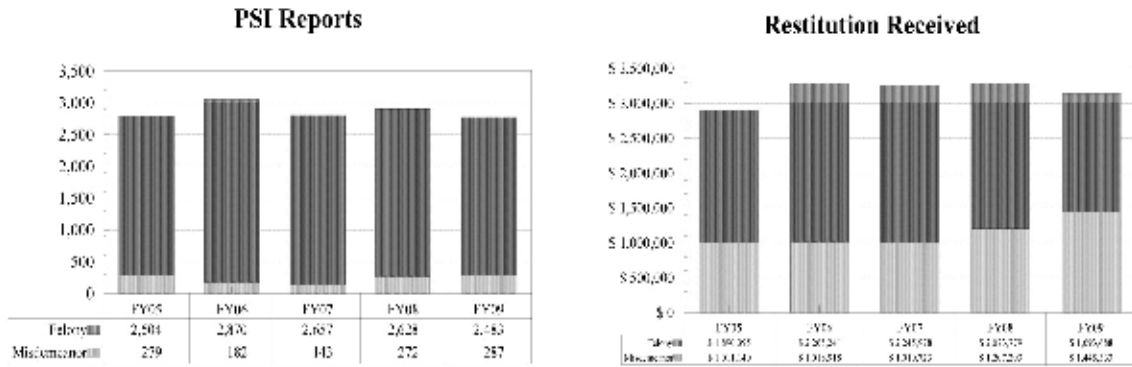


COURT SERVICES CASELOAD DATA

Table 21. Court Services Activities - FY2009

SERVICE CATEGORIES	FIRST CIRCUIT	SECOND CIRCUIT	THIRD CIRCUIT	FOURTH CIRCUIT	FIFTH CIRCUIT	SIXTH CIRCUIT	SEVENTH CIRCUIT	STATE TOTALS
Juvenile Service:								
PHSCS	116	158	54	59	45	117	124	673
Placed on 90-Day Diversion Services	214	277	175	4	38	60	72	840
Active Cases at Beginning of FY	268	533	184	137	277	192	519	2,110
Placed on Probation	357	651	321	153	288	185	877	2,832
Active Cases at End of FY	270	493	185	149	195	204	407	1,903
Restitution Received	\$57,383	\$100,933	\$44,902	\$18,656	\$25,767	\$24,506	\$27,038	\$299,184
Case Services Monitoring:								
Placed in Program During FY	6	553	36	0	0	5	2	602
Active Cases at End of FY	4	341	14	0	0	5	0	364
Interstate Compact Cases-In	1	4	4	2	3	4	4	22
Interstate Compact Cases-Out	6	18	0	0	1	1	2	28
Intensive Probation:								
Active Cases At Beginning of FY	37	17	7	6	30	0	18	115
Placed In Program During FY	53	34	11	14	39	12	25	188
Successfully Completed Program	33	7	5	8	26	0	12	91
Failed Program and Sent to DOC	21	21	4	2	18	6	22	94
Failed Program (Other)	0	3	0	2	0	0	0	5
Active Cases at End of FY	36	20	9	8	25	6	9	113
Adult Service, Misdemeanor:								
PSI Reports	32	29	20	29	6	18	153	287
Placed on Probation	40	16	13	8	1	5	555	638
On Probation at End of FY	56	36	19	14	5	12	576	718
Restitution Received	\$197,199	\$296,127	\$223,680	\$71,012	\$363,046	\$93,897	\$200,372	\$1,445,333
Adult Service, Felony:								
PSI Reports	380	476	361	231	68	92	875	2,483
Placed on Probation	232	425	183	155	208	57	426	1,686
On Probation at End of FY	575	819	343	332	372	190	1053	3,684
Restitution Received	\$264,098	\$307,187	\$210,605	\$216,471	\$203,911	\$79,224	\$412,193	\$1,693,688
Adult Service, Drug Court:								
Drug Court Participants	N/A	N/A	N/A	19	N/A	N/A	N/A	19
Drug Court Sessions	N/A	N/A	N/A	50	N/A	N/A	N/A	50
Case Services Monitoring Program (F&M):								
Placed in Program	33	424	311	0	553	1	197	1,519
Active Cases at End of FY	37	578	227	0	238	9	218	1,307
Adult Interstate Compact Caseload (F&M):								
Total Placed on Probation - In & Out	66	98	39	55	32	18	60	368
On Probation at End of FY	194	155	67	131	81	51	143	822

Chart 21. Court Services Workload Adult Services



Total Adult Caseload *

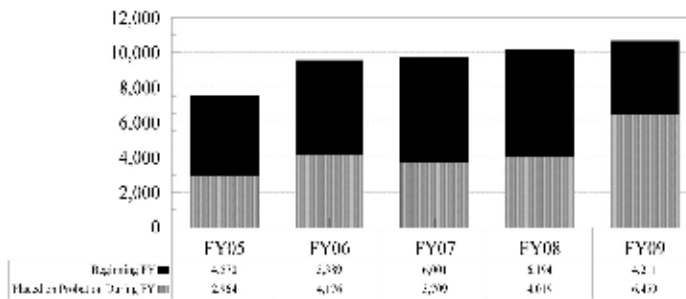
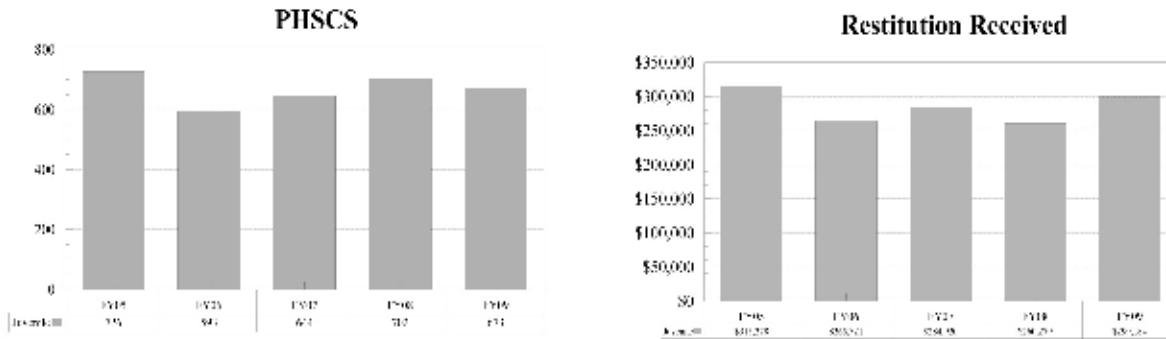
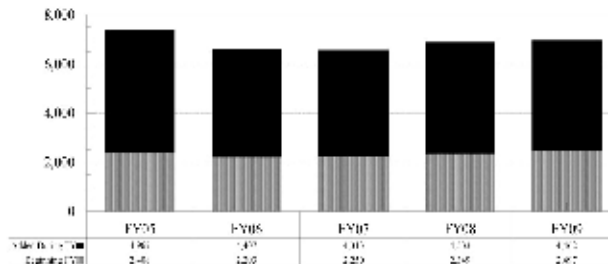


Chart 22. Court Services Workload Juvenile Services



Total Juvenile Caseload *



* Includes Case Services Monitoring

Table 22.
34-46-2 Tobacco Violations and
35-9-2 Possession of Alcohol by a Minor
(New Table in FY2009 Annual Report)

SDCL	Offense Description	FY2009			FY2008			FY2007		
		Charges	Convictions	Dismissals	Charges	Convictions	Dismissals	Charges	Convictions	Dismissals
34-46-2 (1) (M2)	Sell/Distribute Tobacco Under Age 18	34	28	4	54	47	1	30	27	2
34-46-2 (2) (M2)	Purchase/Receive/Consume/Possess Tobacco Under Age 18	310	290	25	248	216	18	153	146	12
35-9-1 (M1)	Give Alcohol to any Person Under 18	224	69	129	252	74	166	300	83	188
35-9-1(1) (M2)	Give Person Alcohol Ages 18-21	511	281	240	376	218	145	371	194	187
35-9-2 (M2)	Possession of Alcohol by a Minor	7116	5351	2114	7440	5663	2030	7489	5665	2315
35-10-17 (M1)	Maintain Place To Violate Beverage Laws	331	212	90	348	225	97	350	228	91

NOTES